

## Signalling Appeal

I enclose the sum of £..... as a donation to the Ffestiniog Railway Society Signalling Appeal.

### Gift Aid Declaration

Ffestiniog Railway Society  
Charity No 1064178

Please treat as Gift Aid donations all qualifying gifts of money made

Today  In the past 4 years  In the future

Please tick ALL boxes that apply

I confirm that I have paid or will pay an amount of Income Tax and/or Capital Gains Tax for each year (6 April to 5 April) that is at least equal to the amount of tax that all the charities or Community Amateur Sports Clubs (CASCS) that I donate to will reclaim on my gifts for the tax year. I understand that other taxes such as VAT and council tax do not qualify. I understand the charity will reclaim 28p of tax on every £1 that I gave up to 5 April 2008 and will reclaim 25p of tax on every £1 that I give on or after 6 April 2008.

### Donor Details

Title..... First Name or Initials .....

Surname..... Membership No. (if available) .....

Full Home Address .....

Post Code.....

Date..... Signature.....

Please notify the charity if you:

Want to cancel the declaration

Change your name or home address

No longer pay sufficient tax on your income or capital gains.

If you pay income tax at the higher rate and want to receive the additional tax relief due to you, you must include all your Gift Aid donations on your Self Assessment tax return or ask HM Revenue and Customs to adjust your tax code.

## Porthmadog Harbour Station Signalling

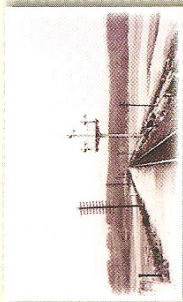
Photo: H.F. Wheeler, courtesy Maggie Wheeler

Developments in Memory of  
*Alan Pegler*



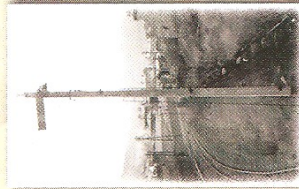
# Porthmadog Harbour Station

## ... Developments in memory of Alan Pegler



Harbour Station has been changing ever since the Ffestiniog Railway was reopened in 1954. Now it has to be capable of accommodating trains from both the Ffestiniog and the Welsh Highland Railway at the same time. The Cob has had to be widened to create an extra platform and run round loop. In addition to the civil engineering we also need a new comprehensive signalling system that is capable of handling all the trains with greater efficiency. The current exposed ground frame simply does not have that capability.

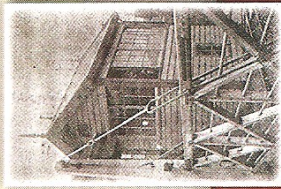
So what sort of system do we need at Porthmadog, and what style of appearance should it have? Modernity is not an option but only as long as we can fund something more traditional. The low cost option would be colour lights, but the FR and its supporters have looked to the line's heritage for inspiration as this is our chance to achieve something of which we can be proud.



The signals we wish to recreate are the ones previously supplied by McKenzie and Holland in the nineteenth century for the re-signalling of the Blaenau sections. This was a style sadly lost with conversion to a "light railway" in the inter war years.

There is a heritage style shopping list starting with replacement of the much missed Trident signal. A signal box is also required at Porthmadog, which is something it never had previously. This structure will again be inspired by those in Blaenau but constructed to withstand the harsh coastal environment. Internally it will house an electromechanical frame, recovered from Darlington and overhauled by one of our volunteers.

To make this happen we need to raise £50,000. Your outstanding generosity in previous appeals has helped the Ffestiniog to produce superb locomotives, carriages and volunteer accommodation. This is your chance to help us to achieve high visual standards with this development. Please help by making a donation.



Please use the form overleaf and send your donation to

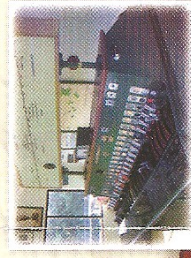
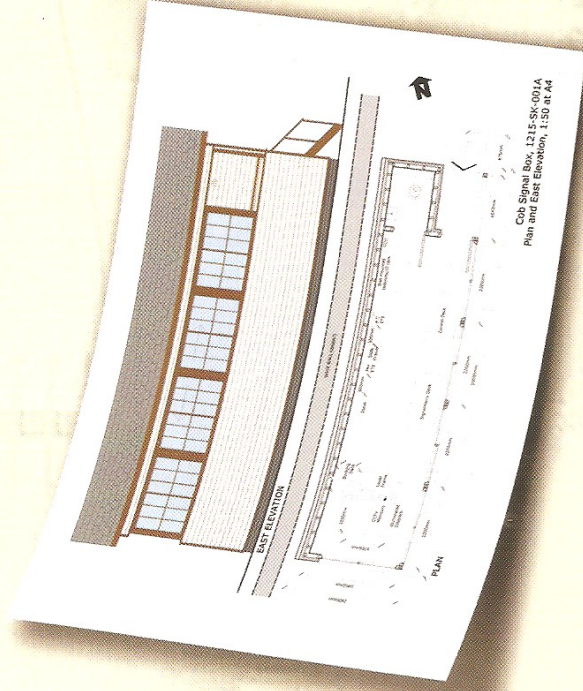
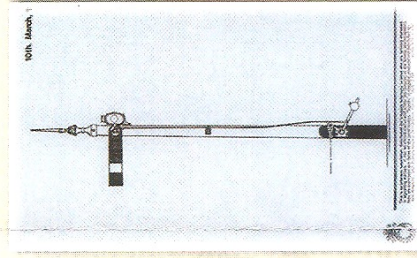
**FFESTINIOG RAILWAY SOCIETY**

**FREEPOST NATE1232 - HALTWHISTLE - NE49 9BR**

*A final point. You will be aware that we recently lost our president Alan Pegler at the age of 92. He played a significant role in rescuing our railway in the early 1950s. We have been seeking a way to commemorate his life and contribution to the Ffestiniog. He loved the FR and followed all the developments with interest. Alan's family have requested that this major development should be his memorial so your donation will not just be for a signalling scheme but a memorial to Alan.*



Photo: E. Clayton



### PLEASE NOTE

The rules regarding Gift Aid Declarations have recently changed, to ensure we have a correct declaration please fill in the form overleaf and return it with your donation.

*Thank You*